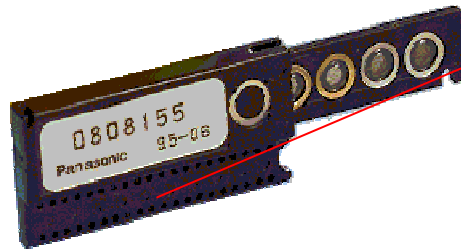


## Explanation of Dosimeter ID Codes

### Whole Body TLD

The reader will identify, save and transmit the ID Code of the dosimeter with the Type Code '2' meaning Whole Body Dosimeter.  
The Type and ID Code is transmitted together, in this example as 20808155.



Optically coded Identification number  
7-digits (in this case 0808155)

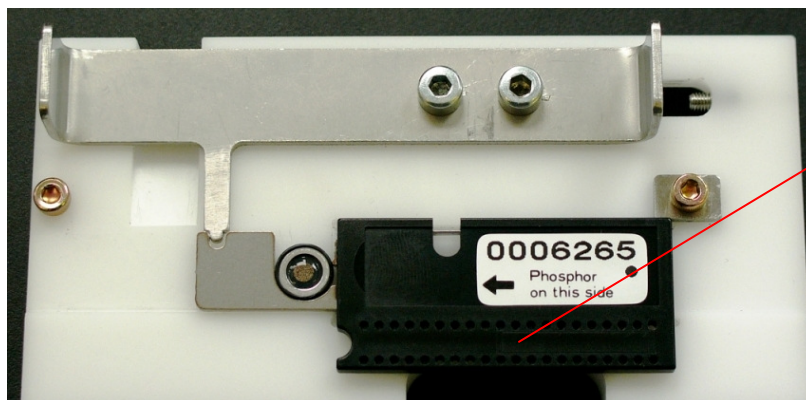
### Extremity Dosimeter

For processing in the TLD Readers, the extremity disk is placed into the special UD-807HA2 adaptor.

The TLD Reader will transmit the Identification of the Adaptor, together with the Type Code '7' meaning Extremity Dosimeter, in this case below as 70006265.



ID Code on reverse  
side of Extremity  
Dosimeter



Extremity Dosimeter in  
Adaptor

The user therefore has two choices for the treatment of Extremity Disks:

1. The user will purchase a matching pair of Extremity Disks and Adaptors with the same Identification Code.

The condition is that he must ensure correct matching.

2. The user will purchase a smaller number of Adaptors numbered say, 0000001 – up. In this case these will be transmitted by the TLD Reader as 70000001- up.

The condition is that once the doses have been transmitted, the user must manually link the Adaptor ID Code with the actual ID Code of the Extremity Disk.

Both methods are equally valid and approved for use in Dosimetry Laboratories.